



مِلَا
MILAHA



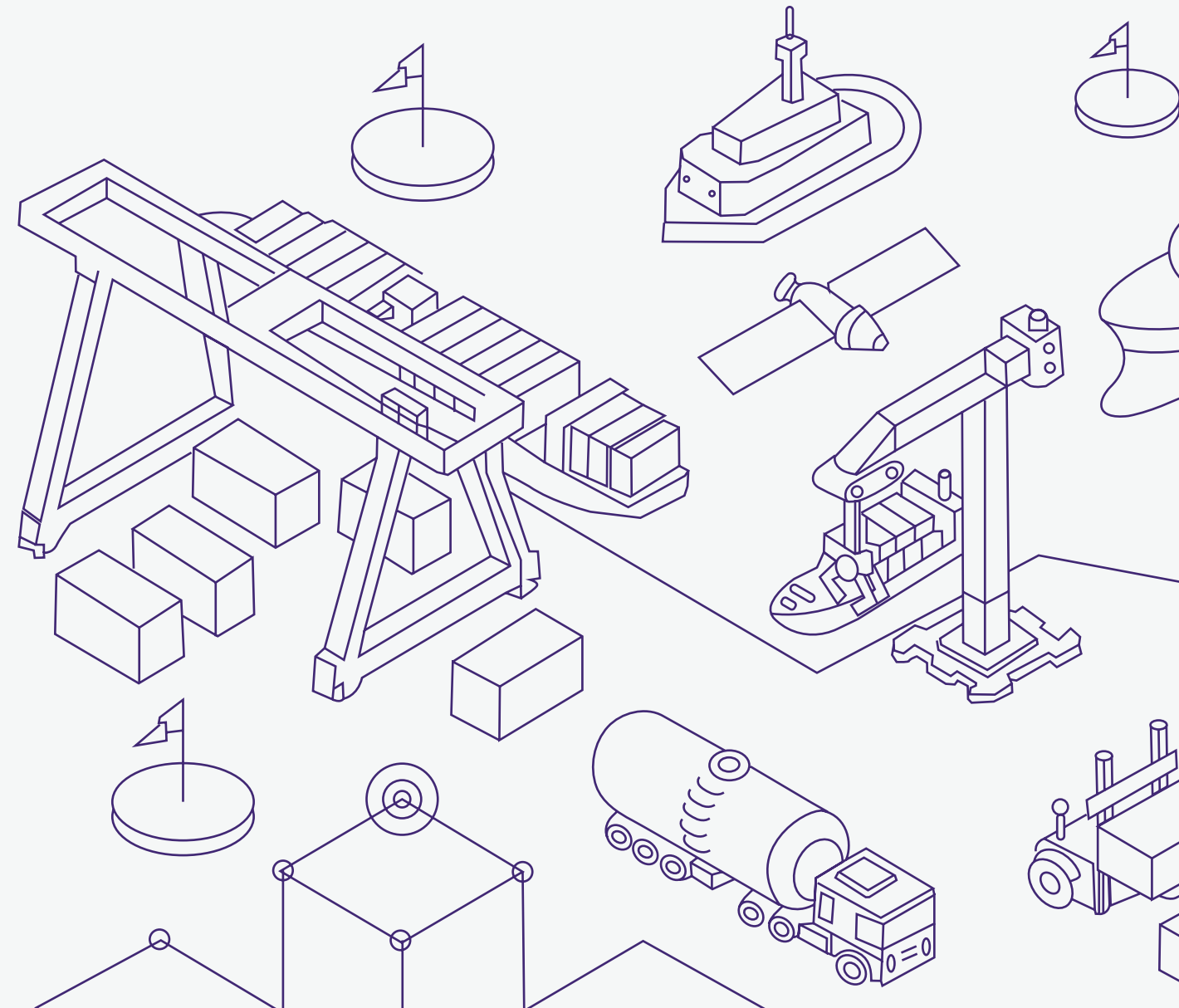
Synchronised Solutions
that Mobilise Business

Qatarnavigation



CONTENTS

- About Milaha
- History & Milestones
- Key Figures
- Strategic Business Pillars
- Offshore & Marine
- Marine & Technical Services
- Gas & Petrochem
- Maritime & Logistics
- Capital
- Strategic Investments & Partners



About Milaha

MILAHA (Qatar Navigation Q.P.S.C.) stands as one of the largest and most diversified maritime and logistics companies in the Middle East, with operations spanning from ocean transport and offshore support services to third-party logistics and ancillary solutions.

Established in July 1957, Milaha stands as Qatar's first public shareholding company, registered under Commercial Registration No. 1. Over six decades later, it continues to play a central role in shaping the nation's maritime and logistics landscape.

From its early beginnings as a coastal operator, Milaha has evolved into a diversified maritime and logistics group with integrated operations across offshore services, oil and gas support, marine transport, ship management, and port logistics.

The company also manages container and product shipping, offers freight forwarding, warehousing, and agency solutions, and operates a modern shipyard serving regional and international clients.

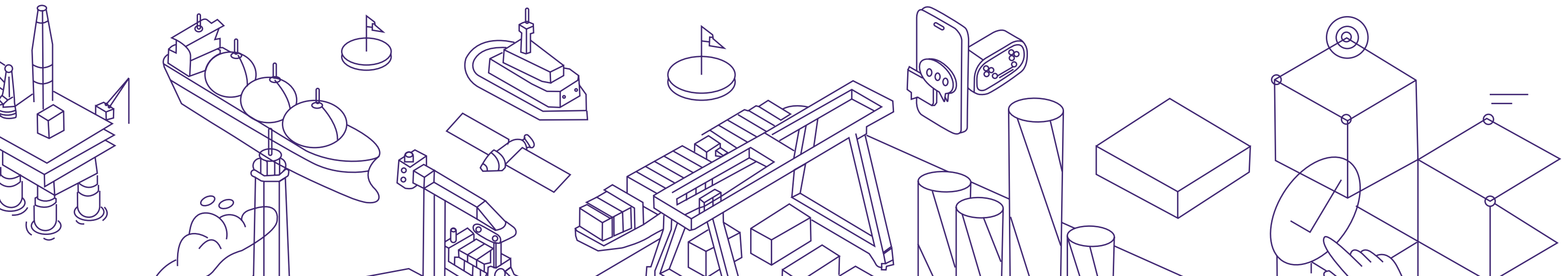
Beyond its core operations, Milaha maintains strategic real-estate and capital-market investments which position it as a stable contributor to Qatar's economic growth. On the Qatar Stock Exchange, the company is listed under its legal entity name Qatar Navigation Q.P.S.C. (QNNS).

Vision

To be the partner of choice in maritime & logistics sector, with a dominant share in our home market and a strong international presence to deliver sustainable growth to our shareholders.

Mission

To consistently deliver reliable services by focusing on safety, quality and our customers; to provide an enriching work environment and to always live by our values.



OUR VALUES

At Milaha, our values shape the way we work and the standards we uphold. They define how we build.

Strive

To serve every client in the best way possible and improve the quality of service every day.

Synchronised

All success comes from our collective strength and our ability to work together to solve complex problems and innovate with smart solutions.

Inspired

The history of Milaha is a source of pride for the company, but an eye must be kept on the future in order to leave valuable legacy.

Committed

To remain honest with all colleagues, clients and partners, it is essential to never under-deliver. Furthermore, it is important to always finish anything and everything that the company starts.



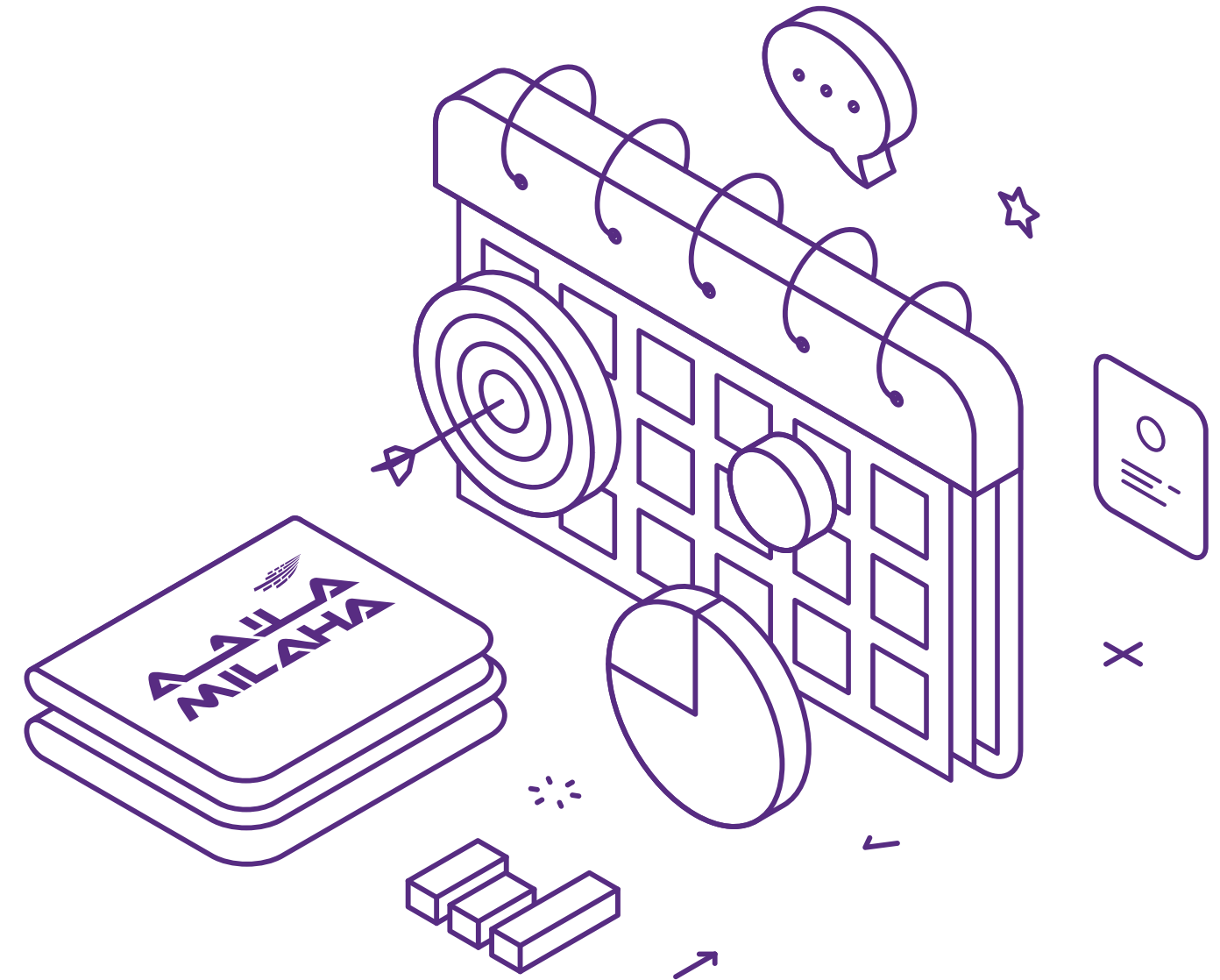
History & Milestones

Milaha's origins date to **1957**, when Qatar National Navigation & Transport Company was founded as the nation's first shipping agent. That establishment marked the start of structured maritime operations in Qatar and laid the foundation for a company that has grown in parallel with the country's development.

During the **1960s** and **1970s**, Milaha supported the steady expansion of coastal and regional trade which contributed to the early framework of Qatar's logistics and port activities. The **1980s** and **1990s** marked a period of capability building and industrial participation, including the creation of Qatar's first integrated ship repair and fabrication facility and the company's early involvement in offshore and energy logistics.

By the early **2000s**, Milaha had brought its maritime and transport services under a unified structure that strengthened its position across regional shipping routes and marine operations. In the years that followed, the company expanded its fleet, developed logistics infrastructure, and extended its reach across major trade corridors connecting the Gulf with Asia, Africa, and Europe.

Today, Milaha's history reflects a consistent path of growth anchored in reliability, technical depth, and national contribution. Each stage of its journey aligns with the broader development of Qatar's maritime sector, from its coastal beginnings to a position of regional leadership in trade and logistics.



KEY FIGURES

* According to 2024 statistics

1st 
Commercially
Registered Company
in Qatar

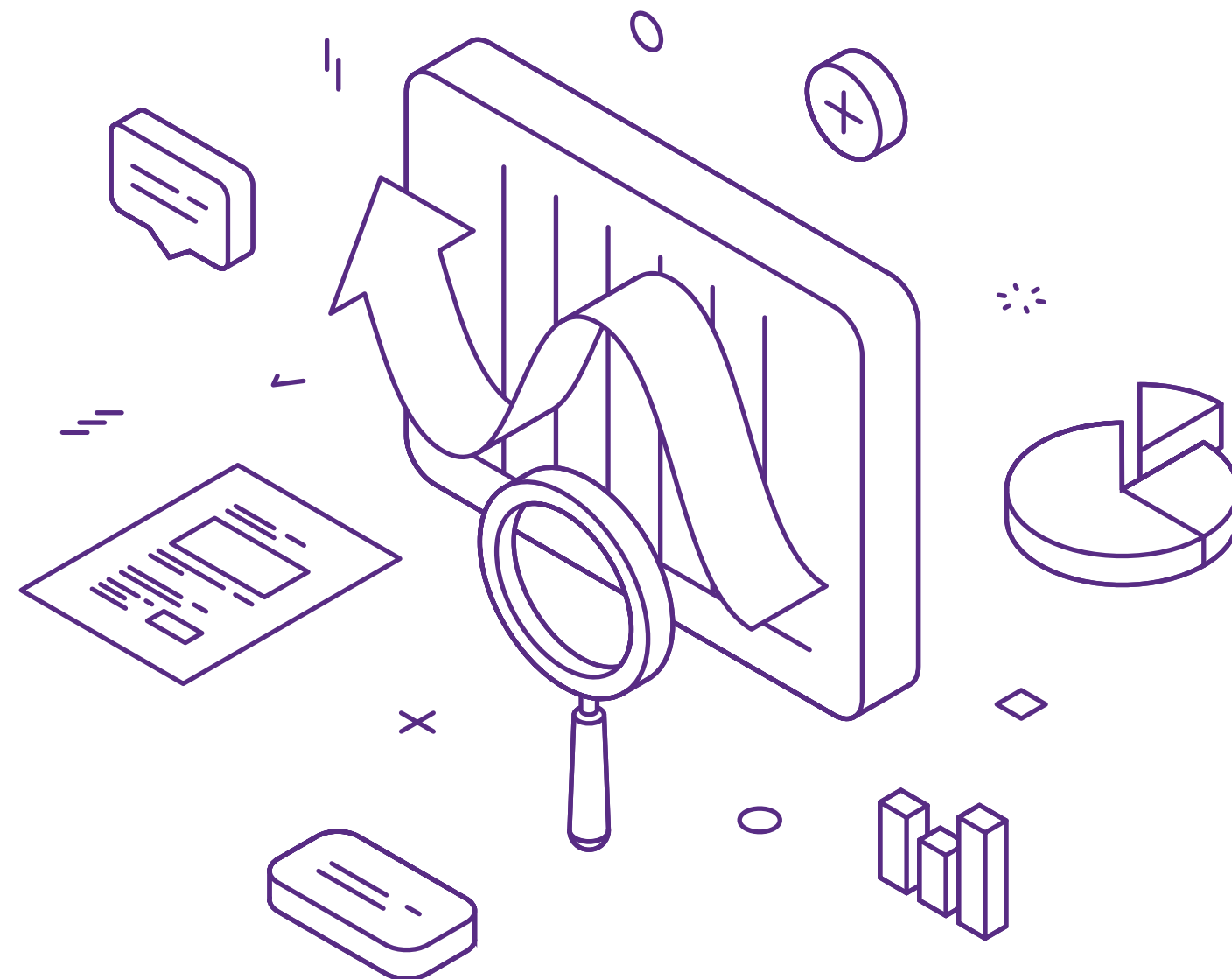
68
Years in Operation

 **19.2**
QAR bn
Total Assets

 **2.8**
QAR bn
Operating Revenue

 **4,000+**
Employees
*incl. crew & divers

 **70+**
Fully Owned
Vessels



STRATEGIC BUSINESS PILLARS



What We Depend On:

- **People and Expertise**
Skilled professionals across multiple disciplines drive safe and reliable operations.
- **Assets and Infrastructure**
Fleet, shipyards, logistics hubs, and real estate support end-to-end maritime activity.
- **Partnerships and Stakeholders**
Strong collaboration with national and global partners ensures consistency and trust.
- **Capital and Financial Strength**
A stable balance sheet enables continued investment and diversification.
- **Technology and Systems**
Digital tools and data systems enhance visibility, accuracy, and performance.



Value Created For

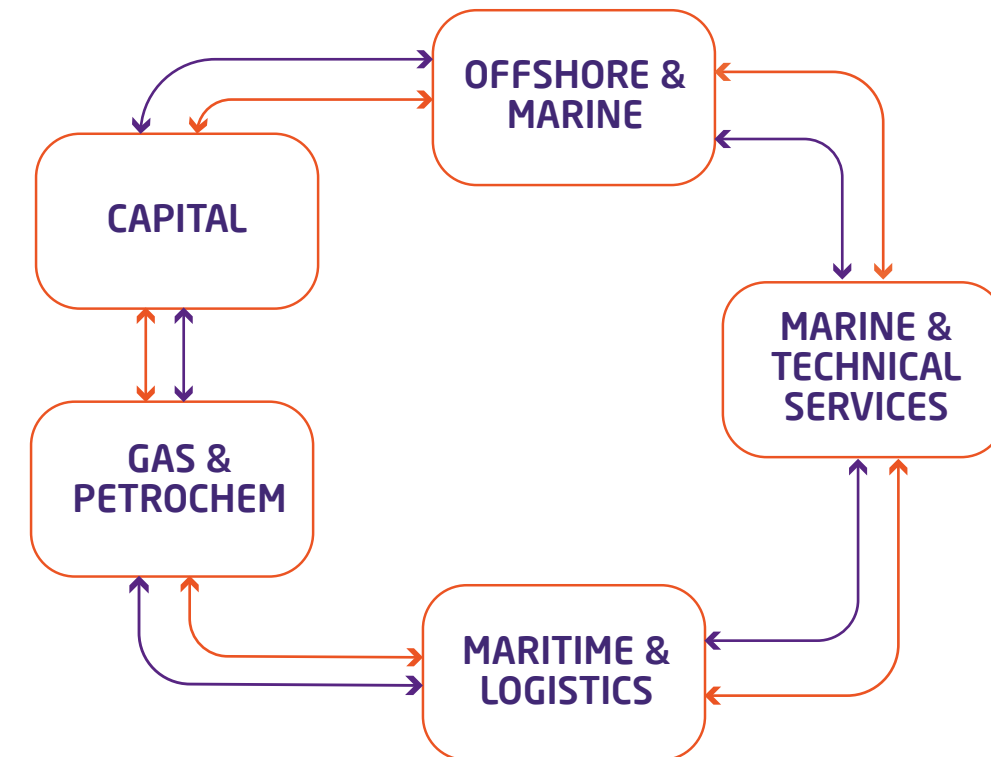
- **Customers**
Reliable transport and logistics ensuring continuity across supply chains.
- **People**
Secure workplaces and long-term professional growth.
- **Economy and Industry**
Infrastructure and services that strengthen Qatar's industrial competitiveness.
- **Shareholders**
Sustained financial returns through disciplined capital management.

How We Create Value.

Milaha is a diversified maritime and logistics group that operates across shipping, offshore and marine services, logistics, industrial projects, and capital investments.

Our integrated portfolio supports Qatar's trade, energy, and industrial sectors by providing reliable connectivity, infrastructure, and long-term value creation. We seek sustainable growth through coordinated management of assets, technology, and people.

Our Integrated Operations



Core Enablers

Technology | People
Partnerships | Capital Discipline

Milaha's divisions operate as one system, combining assets, expertise, and investment to create long-term value for Qatar and its global partners.

Our Integrated Operations

Offshore & Marine

Managing subsea work, vessel chartering, engineering, and industrial logistics for safe and efficient Oil and Gas offshore performance.

- Core Services:
- Subsea Services
 - Engineering & Construction
 - Vessel Chartering
 - Industrial Logistics

Marine & Technical Services

Comprehensive maintenance, repair, and technical support services that improve operations conduct and asset longevity.

- Core Services:
- Ship Management
 - Shipyard
 - Shipping Agency
 - Ship chandling & Supplies
 - Trucks & Heavy Equipment

Maritime & Logistics

Providing integrated supply chain and trade logistics solutions, connecting regional and global routes across sea, land, and port operations.

- Core Services:
- Container Shipping
 - Freight Forwarding
 - Warehousing & Distribution
 - Project Logistics

Gas & Petrochem

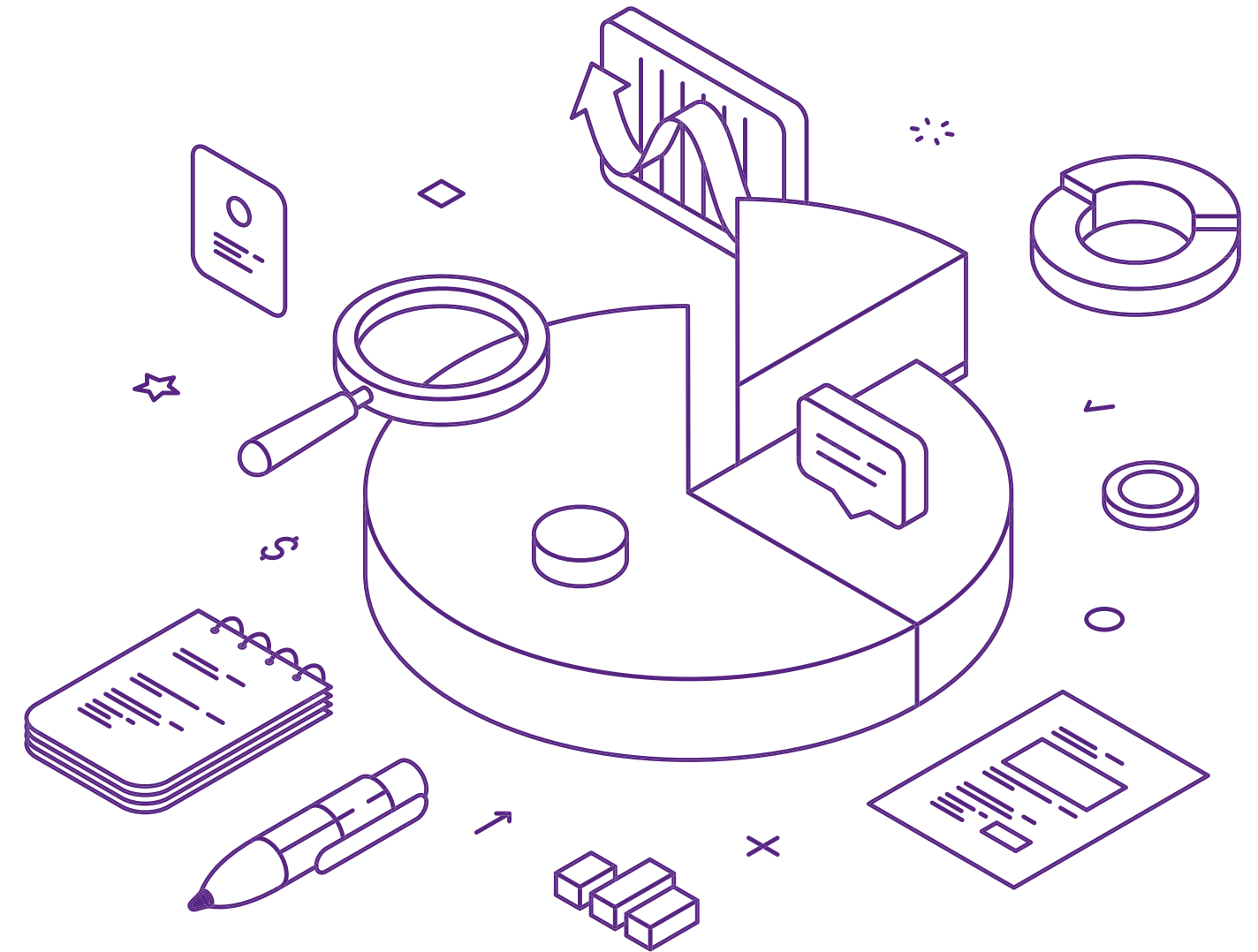
Facilitating marine transport of LNG, LPG, and other petrochemical cargoes and its distribution across regional markets.

- Core Services:
- LNG Transport
 - LPG Transport
 - FSO Operations

Capital

Managing a diversified investment portfolio across real estate and financial markets for long-term growth and stability within the Group.

- Core Services:
- Real Estate
 - Investments



| Offshore & Marine

Supporting offshore energy and industrial operations

Milaha Offshore & Marine delivers integrated offshore, marine, and subsea solutions designed to support the full lifecycle of offshore energy operations. Backed by a robust fleet and world-class technical expertise, the division combines safety, reliability, and efficiency to meet the complex needs of clients across the oil and gas value chain.

As a long-term strategic partner, Milaha brings together its assets, infrastructure, and engineering capabilities to offer customised, asset-backed services that ensure project continuity from exploration to production and maintenance.

Subsea Services

End-to-end underwater solutions for offshore energy projects. We focus on precision, risk management, and sustainability in every phase of operation.

Milaha provides a full suite of subsea capabilities, including:

Remotely Operated Vehicles (ROVs) for drilling support, diving assistance, seabed surveys, debris recovery, and pipeline or platform inspection.

Geophysical surveys incorporating advanced underwater positioning, sub-bottom profiling, side-scan sonar, and multibeam echosounder technologies

Our fleet of Dive Support Vessels (DSVs) and Multi-Purpose Support Vessels (MPSVs) supports subsea pipeline repairs, platform retrofits, and maintenance of offshore infrastructure essential to Qatar's energy supply chain.



| Offshore & Marine

Supporting offshore energy and industrial operations

Chartering Services

70+ VESSELS

Milaha brings over two decades of extensive experience of chartering to Offshore and marine operations. Our diverse fleet of more than 70 high-specification vessels, includes Offshore Support Vessels (OSVs), Anchor Handling Tug Supply (AHTS) vessels, Platform Supply Vessels (PSVs), Jack-up Barges, and Harbour Vessels.

Serving Offshore and Marine
Operations Across the Region

Our operational strength is reinforced by advanced support systems, including Walk-to-Work Gangway technology and Well Stimulation Equipment for safe, efficient, and responsive service delivery in dynamic offshore environments.

Through disciplined asset management and continuous investment, **Milaha Offshore & Marine** remains a trusted partner in Qatar's maritime and energy ecosystem and delivers solutions that combine global standards with regional expertise.



| Offshore & Marine

Supporting offshore energy and industrial operations

Engineering & Construction

Delivering high-standard, cost-conscious, and safe solutions for complex industrial and offshore projects.

Milaha brings in technical skilled professionals and disciplined project delivery to meet demanding timelines without compromise on quality or safety.

Our services include EPCIC and SURF works, offshore module laying, subsea transport, and module fabrication. We extend full support to onshore and offshore facilities through mechanical, electrical, and instrumentation installation, equipment deployment, commissioning, and skilled labour supply.

Industrial Logistics

Our Industrial Logistics unit supports critical supply chain activities across the energy, oil, and gas sectors with dependable logistics and project transport.

We handle heavy-lift and project cargo operations, equipment rental, manpower provision, rigging engineering, transport surveys, and on-site support.



| Marine & Technical Service

Fleet performance and operational reliability

Milaha's Marine & Technical Services division sits at the core of the company's maritime capability. It combines ship management, agency operations, shipyard expertise, chandling, and equipment supply to deliver complete solutions for regional and international partners.

Beyond managing vessels, Milaha designs and fabricates critical offshore structures for the oil and gas sector including subsea pipelines, jackets, and SBM buoys. Every project is built around three fundamentals: operational delivery, precision, and trust. The result is measurable reliability for clients across Qatar and beyond.

Ship Management

From its dual bases in Doha and Mumbai, Milaha Ship Management oversees a fleet of more than 70 vessels, ranging from tankers and product carriers to offshore and container ships. Each asset is managed with a focus on safety and lifecycle value.

The team handles technical and project management, harbour operations, and crew management so every vessel meets international operational and environmental standards. Milaha's approach is practical and disciplined.

Structured systems, capable people, and performance that holds up under scrutiny.



| Marine & Technical Service

Fleet performance and operational reliability

Shipyard

Established in 1982 as Qatar's first fully integrated shipyard, Milaha's facility in Mesaieed Industrial City continues to support the nation's maritime and offshore industries. Its proximity to Hamad Port allows for fast coordinated vessel access and turnaround.

The yard features a floating dock, ship-lift, and advanced workshops, handling everything from vessel repairs and dry-docking to large-scale fabrication and shutdown maintenance. The team specializes in high-end and specialty vessels, delivering customized repair programs that extend operational life and maintain performance.

In parallel, Milaha's fabrication workshops produce subsea and offshore modules, jackets, and other complex components so clients have access to reliable, locally executed, high-quality engineering.

Established in 1982 as Qatar's first fully integrated shipyard.



| Marine & Technical Service

Fleet performance and operational reliability

Shipping Agency

Qatar's 1st registered shipping agency.

A Leading Force in Qatar's Maritime Sector.

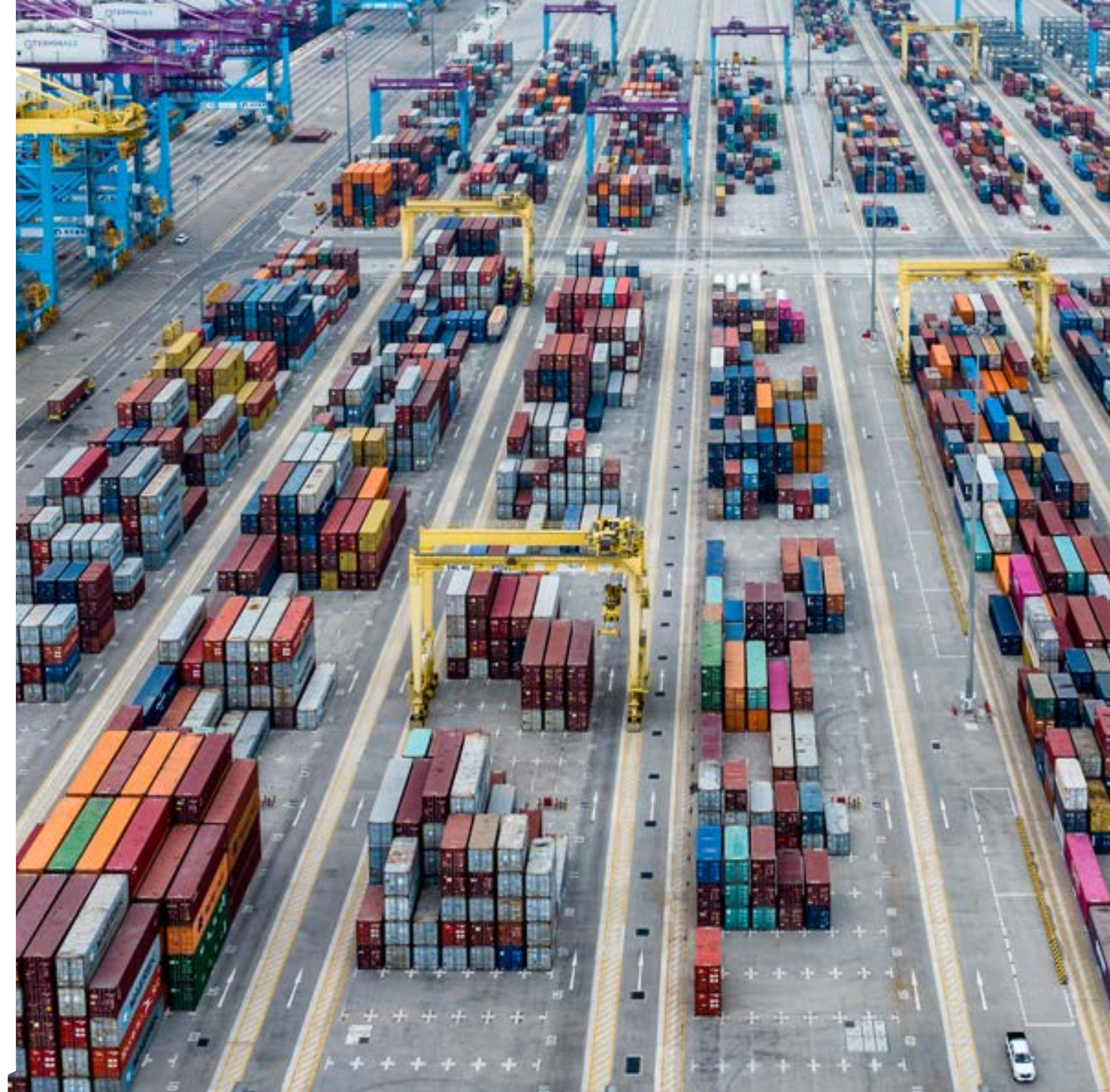
Representing the world's most respected shipping lines.

Today, Milaha represents global carriers including Qatar Navigation Line (QNL), Nippon Yusen Kaisha (NYK), Mitsui OSK Line (MOL), United Global Shipping Agency (UGSA), Shipping Corporation of India (SCI), Ocean Network Express (ONE), and operates a joint venture with Hapag-Lloyd Qatar.

Our agencies provide full representation and vessel support across Qatari waters, with teams based in Ras Laffan, Hamad, and Mesaieed Ports.

Milaha holds the distinction of being Qatar's first registered shipping agent, linking global shipping lines with national ports and authorities. The agency manages a wide range of vessel operations.

Milaha holds the distinction of being Qatar's first registered shipping agent, linking global shipping lines with national ports and authorities. The agency manages a wide range of vessel operations.



| Marine & Technical Service

Fleet performance and operational reliability

Ship Chandling and Supplies

Comprehensive marine support across Qatar and Dubai.

Milaha's Ship Chandling & Supplies division serves as a single source for high-quality products and services supporting commercial, industrial, and luxury vessels.

We provide essential provisions from food supplies, lubricants, and chemicals to deck and engine stores, cabin equipment, and spare parts so vessels remain operational and compliant. Personal protective equipment is supplied to safeguard crew safety.

Representing leading global brands in marine equipment, electronics, and engines, Milaha delivers products built for the demands of maritime operations.

With a strong presence across Qatar's ports, we provide timely support that keeps fleets efficient and schedules uninterrupted.

Heavy Equipment & Marine Engines

Operating as a trusted supplier of Marine Engines industrial heavy equipment, serving construction, logistics, marine sector and energy projects across Qatar.



| Gas & Petrochem

Connecting Qatar's energy exports to global markets

Milaha operates a diversified fleet of LNG and LPG carriers providing secure and efficient transportation of liquefied gases across global trade routes.

The company's long-standing presence in oil and gas shipping anchors its partnerships with major energy producers and traders.

Through joint ventures and technical collaborations, Milaha manages fleet performance, maintenance, and safety systems with precision-based oversight.

700,000 barrels Storage Capacity

Qatar's first Floating Storage and Offloading (FSO) operator

Milaha supports offshore production with a 700,000-barrel capacity asset that strengthens national energy infrastructure and enhances operational continuity within the sector.



| Maritime & Logistics

Enabling regional trade and global connectivity

Serving as integrated supply chain solutions for clients across energy, heavy industry, defense, infrastructure, aviation, healthcare, commerce, and consumer sectors.

Milaha provides container shipping, port services, freight forwarding, warehousing, and distribution for an end-to-end connectivity within Qatar and across international markets.

Container Shipping

Milaha began its shipping activities in 1974 as a barging and lighterage service in the Arabian Gulf.

Since 2018, the liner and feeder network has expanded to more than 30 countries, linking Southeast Asia, China, India, the Arabian Gulf, the Mediterranean, and the Black Sea. Fleet deployment and schedule coordination are managed through digital systems for punctuality, cargo integrity, and network efficiency.

Freight Forwarding

Comprehensive forwarding operations through a regional infrastructure and long-established agency network built over six decades.

Services include multimodal transport, customs coordination, and storage solutions designed to optimize cargo flow between ports, airports, and inland destinations.

Headquartered in Doha, with regional offices in Dubai and forthcoming presence in Saudi Arabia, Milaha maintains direct control of customer operations at strategic points across the region.



| Maritime & Logistics

Enabling regional trade and global connectivity

Warehousing & Distribution

Bonded Warehousing High specifications

36,000 m² of temperature-controlled warehousing at the heart of Qatar's logistics network.

Located near major ports, Milaha Logistics City provides A-grade facilities for frozen, chilled, and temperature-controlled cargo.

Capabilities include storage, handling, value-added processing, bonded warehousing, customs clearance, and distribution through a company-owned fleet.

Additional warehousing in Jebel Ali South Zone provides transit and free-zone facilities with direct access to Jebel Ali Port, Dubai World Central Airport (Al Maktoum International Airport), and the regional highway network covering the GCC and Levant.

Project Logistics

Project Logistics supports offshore, oil and gas, construction, manufacturing, and heavy-industry sectors through specialised cargo handling, route engineering, and equipment mobilisation.



| Capital

Sustaining long-term financial strength

Milaha Capital manages a diversified portfolio of financial and real-estate investments that highlight the Group's balance sheet and provide long-term support to its operating businesses.

The division sustains Milaha's financial resilience through disciplined asset management, risk control, and capital allocation aligned with the company's strategic priorities.

Real Estate

The real-estate portfolio forms a core component of Milaha's asset base. Projects are developed and managed to institutional standards.

Flagship assets include the Navigation Tower in West Bay, a 52-storey commercial landmark that reflects the company's architectural and operational standards.

The Park View villa compound, completed in 2021, comprises 178 residential units with integrated community amenities including a clubhouse, play areas, and childcare facilities. Additional developments across Qatar extend Milaha's presence in premium residential and commercial real estate for stable income generation and long-term asset appreciation.



| Capital

Sustaining long-term financial strength

Investments

Balanced investment strategy driving consistent growth and shareholder value.

QR 4 Billion

In Managed Assets

Milaha Capital acts as the investment holding arm of Qatar Navigation.

Managing approximately QR 4 billion in assets across local equities, fixed income, alternative instruments, and private-market funds.

The investment strategy emphasizes portfolio diversification, measured risk exposure, and consistent shareholder returns through dividends and capital growth.

All activities are governed by a structured investment framework that aligns financial performance with the Group's broader stability and growth objectives.



Strategic Investments & Partners



Milaha is the single largest shareholder in Nakilat with a 36.3% stake. Nakilat operates the world's largest LNG shipping fleet, supporting Qatar's global energy exports.



A joint venture between Mwani Qatar and Milaha, QTerminals manages Hamad Port, Qatar's primary maritime gateway and a key regional logistics hub.



A strategic alliance providing integrated heavy-lift and oversized transport services, supporting major industrial and energy projects across the region.



A joint venture operating a specialised workshop in Ras Laffan, focused maintenance and repair solutions for main engines, auxiliary units, turbochargers, fuel systems, and control electronics.

