



Warehouse & Distribution





QATAR'S FIRST REGISTERED COMPANY

WITH REGISTRATION NO. 0001

ABOUT MILAHA

ملاحه : MILAHA: (n) meaning Navigation

Milaha was established as Qatar's first registered company, in 1957. It started as a shipping agency and over the next 6 decades, has diversified and grown to become one of the largest maritime & logistics service provider in the Middle East

Milaha is listed on the Qatar Stock Exchange – trade symbol (QNAN) under its legal entity name of Qatar Navigation QPSC

Note: Milaha is the brand name, while the legal entity name of our company is Qatar Navigation Q.P.S.C, and it is traded in the Qatar Stock Exchange under the same name



MILAHA

Key Figures

1st 
Commercially
Registered Company
in Qatar

 **4,300+**
People

 **18** Countries

 **2.4** bn
Operating Revenue

 **63**
Years in Operation

 **14.6** bn
Net assets



SERVICE FOCUS

Warehouse & Distribution

Milaha Logistics City is an overall 432,000 sqm area that was inaugurated in 2017. It has Bonded and Non-bonded facilities in the same location with capacity to carry cargo in temperatures from -23°C to +22°C

1

Number of
Warehouses

4

Freezer, Chiller, Temperature
Controlled, Bulk Storage
Facilities

150

Number of staff
under management

36,000 ^{sqm}

Total Warehousing Area

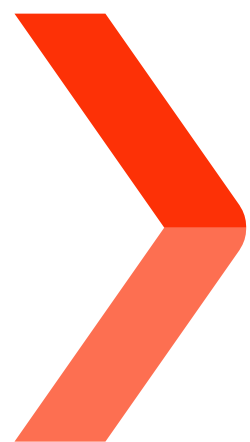
56,000

Pallet Positions available. 1.8 CBM/Pallet

400,000

Approx. CBM's handled/year

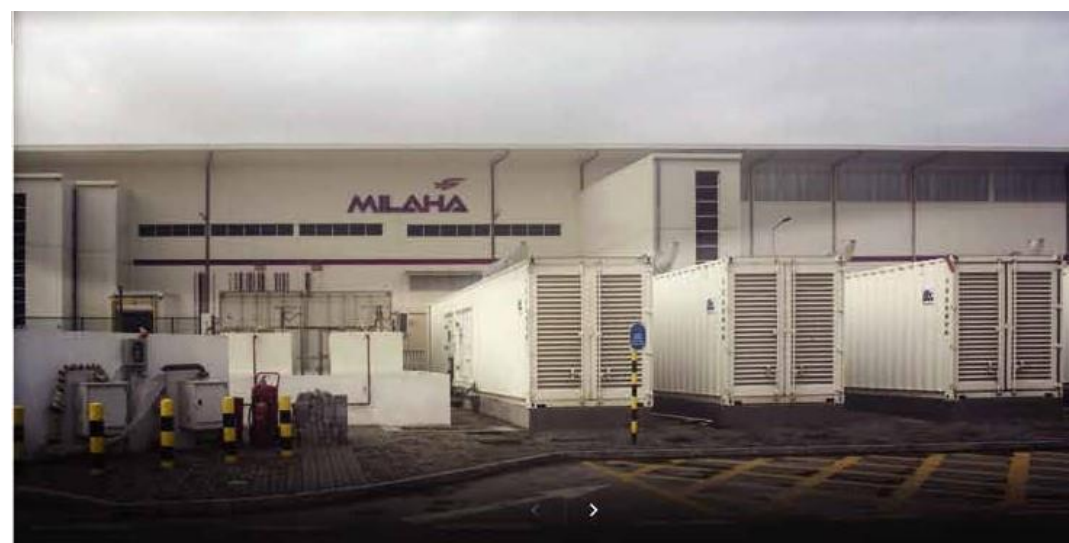




STRATEGIC LOCATION

Milaha Logistics City

Milaha Logistics City is strategically located with close proximity from the main ports and the new orbital road



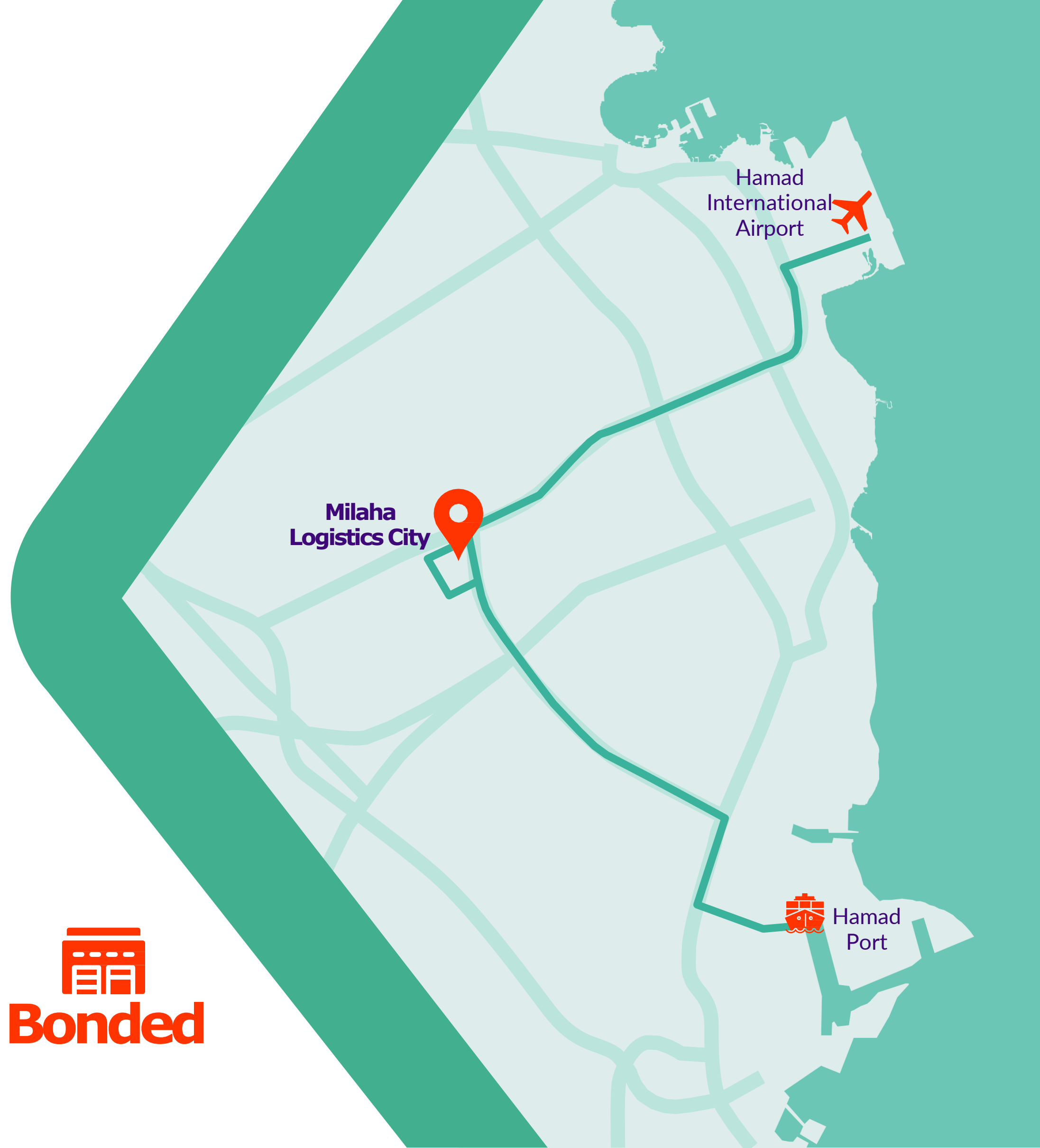
The land plot is 432,000m² and the first phase Milaha has built is a 36,000m² warehouse is split into Frozen, Chilled and Ambient chambers to cater for the different product

30km
from
Hamad Port

25km
from Hamad
International
Airport

24hrs
Security

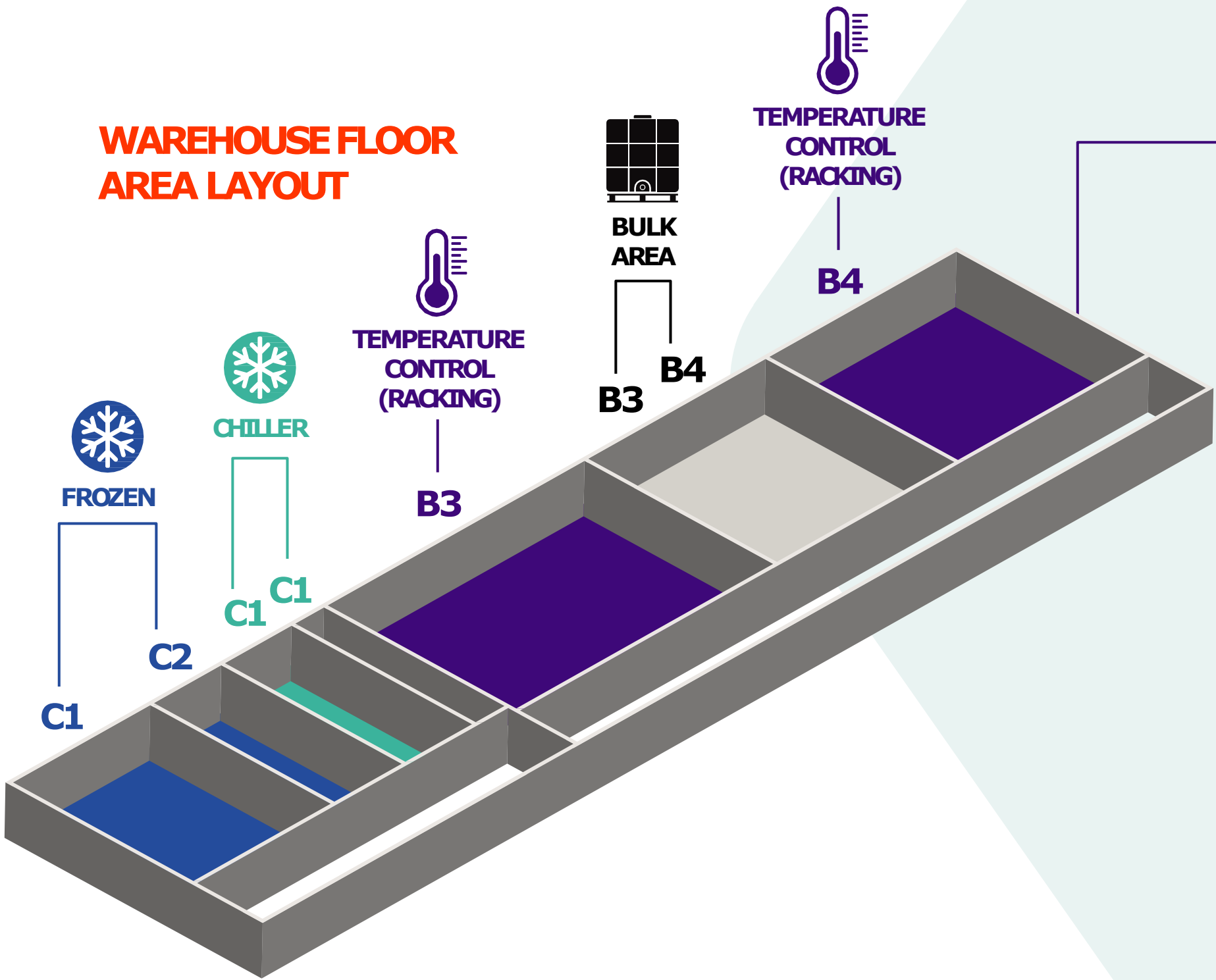

Bonded





SERVICE DETAILS

Layout & Specifications

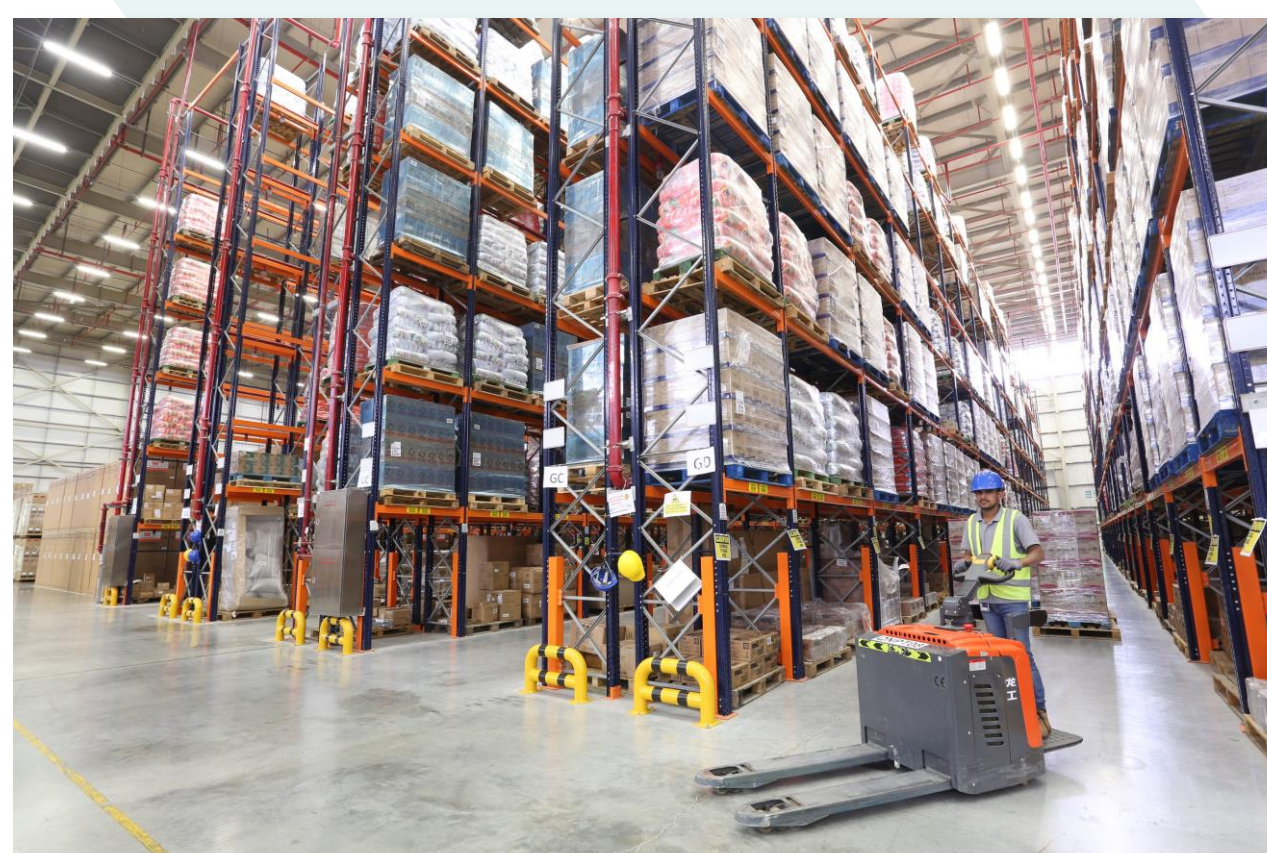
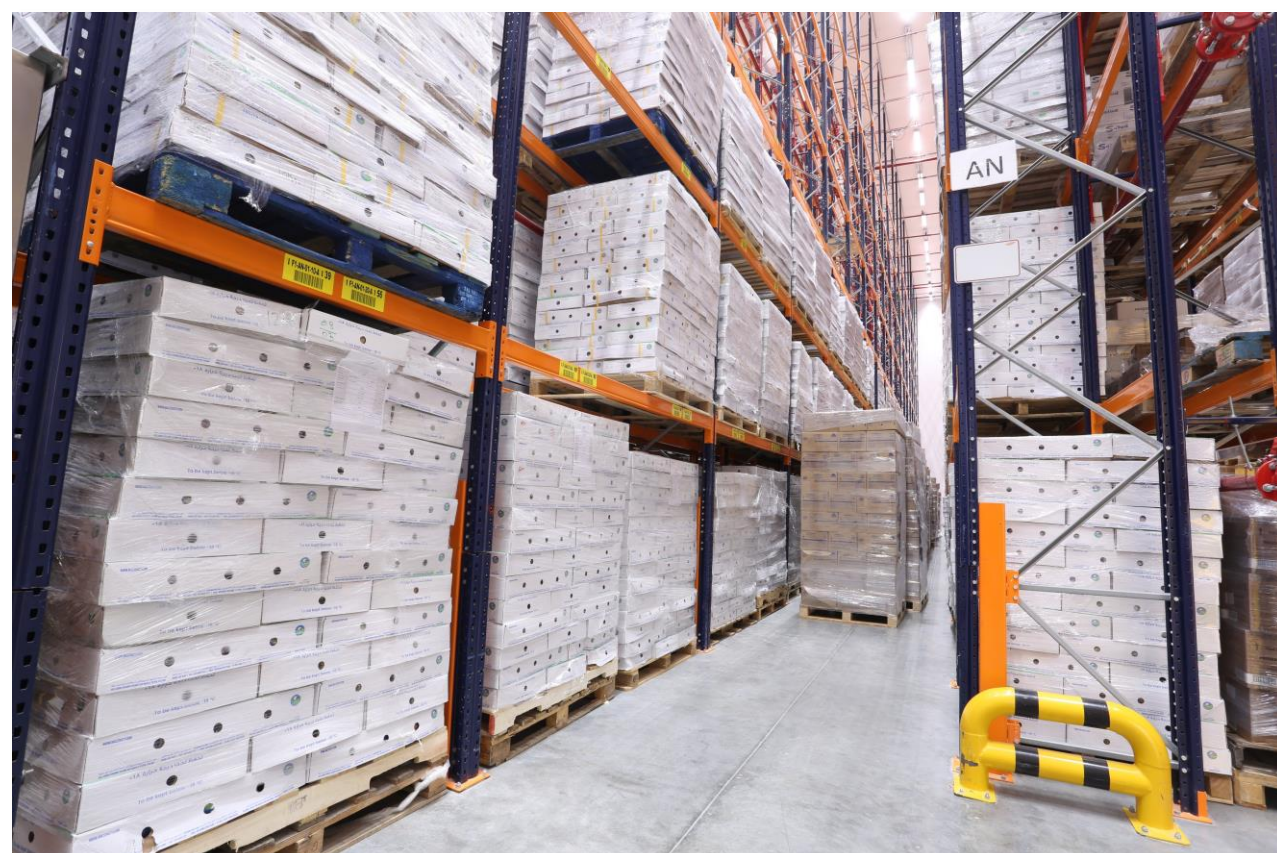
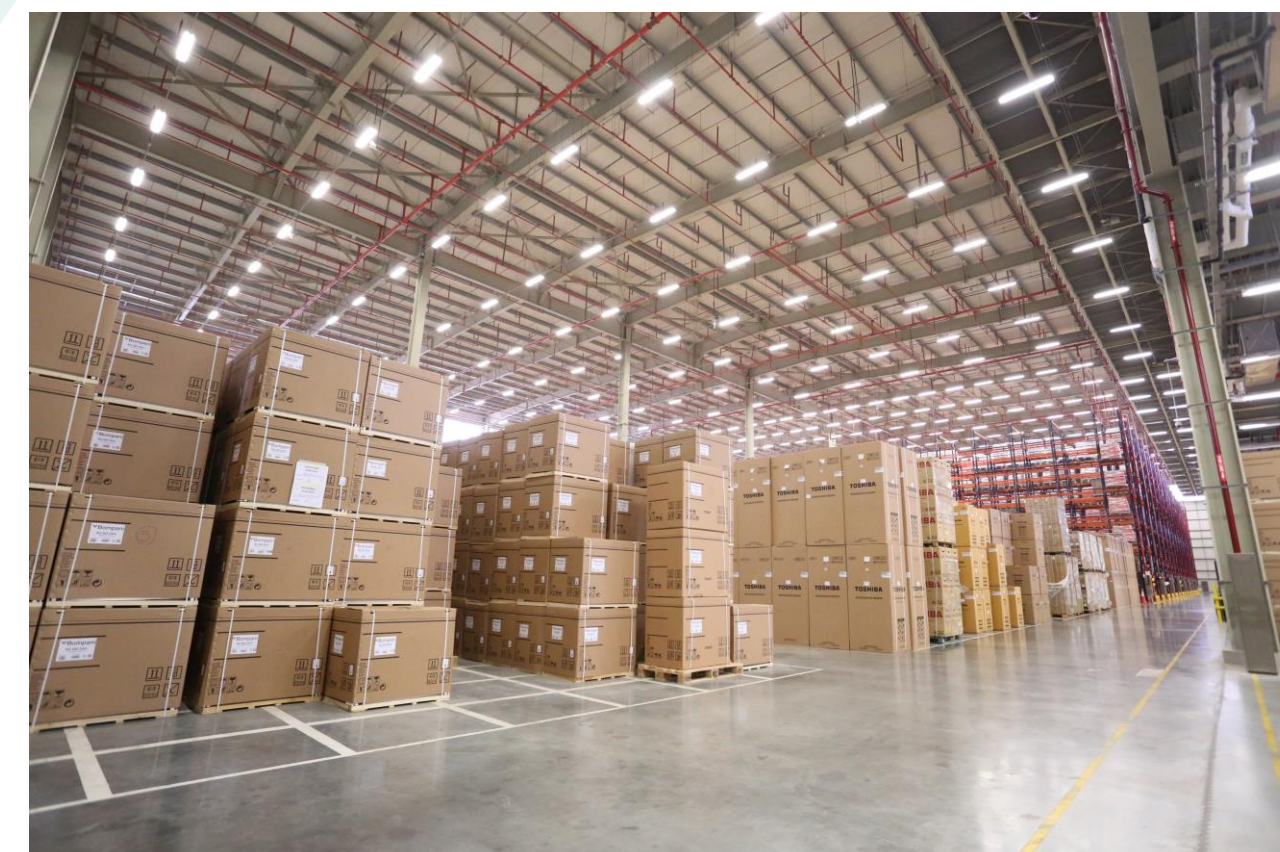
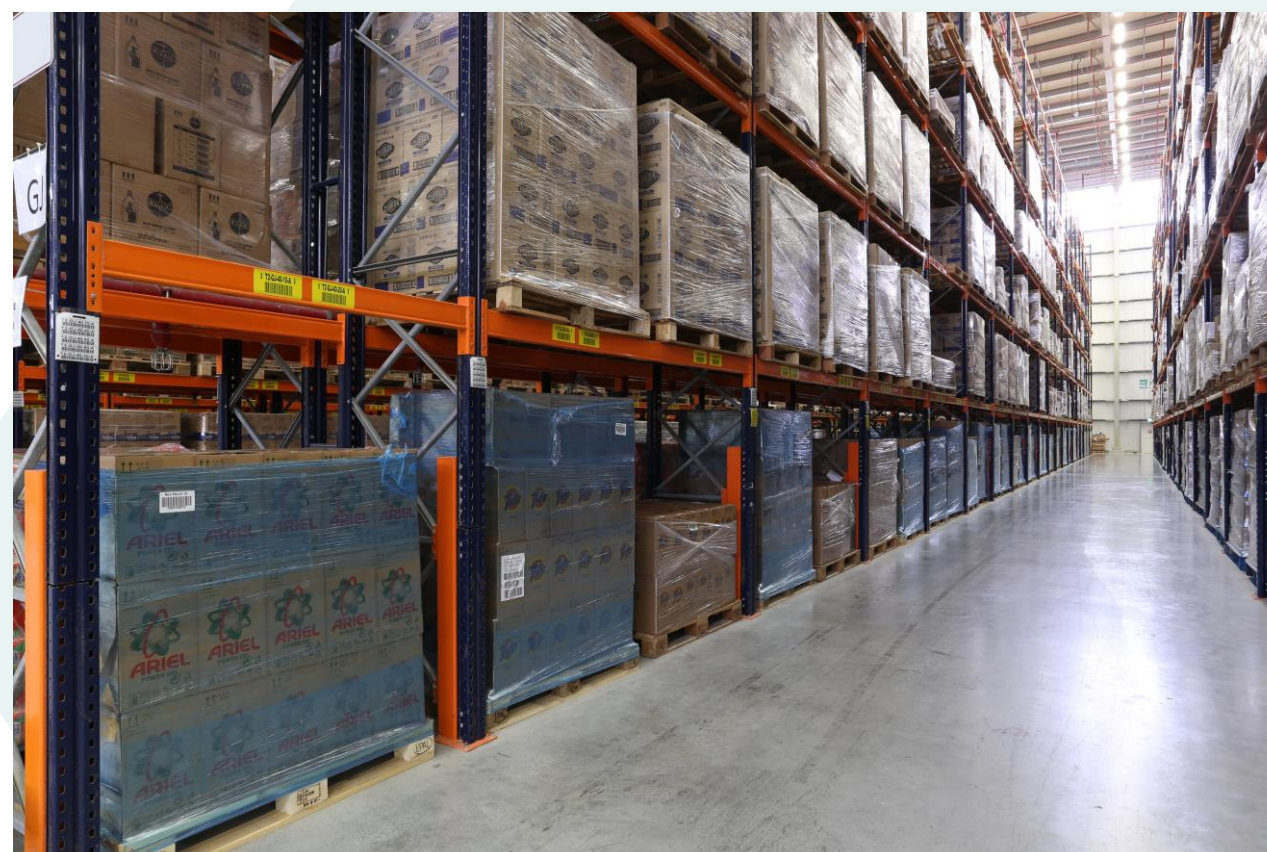
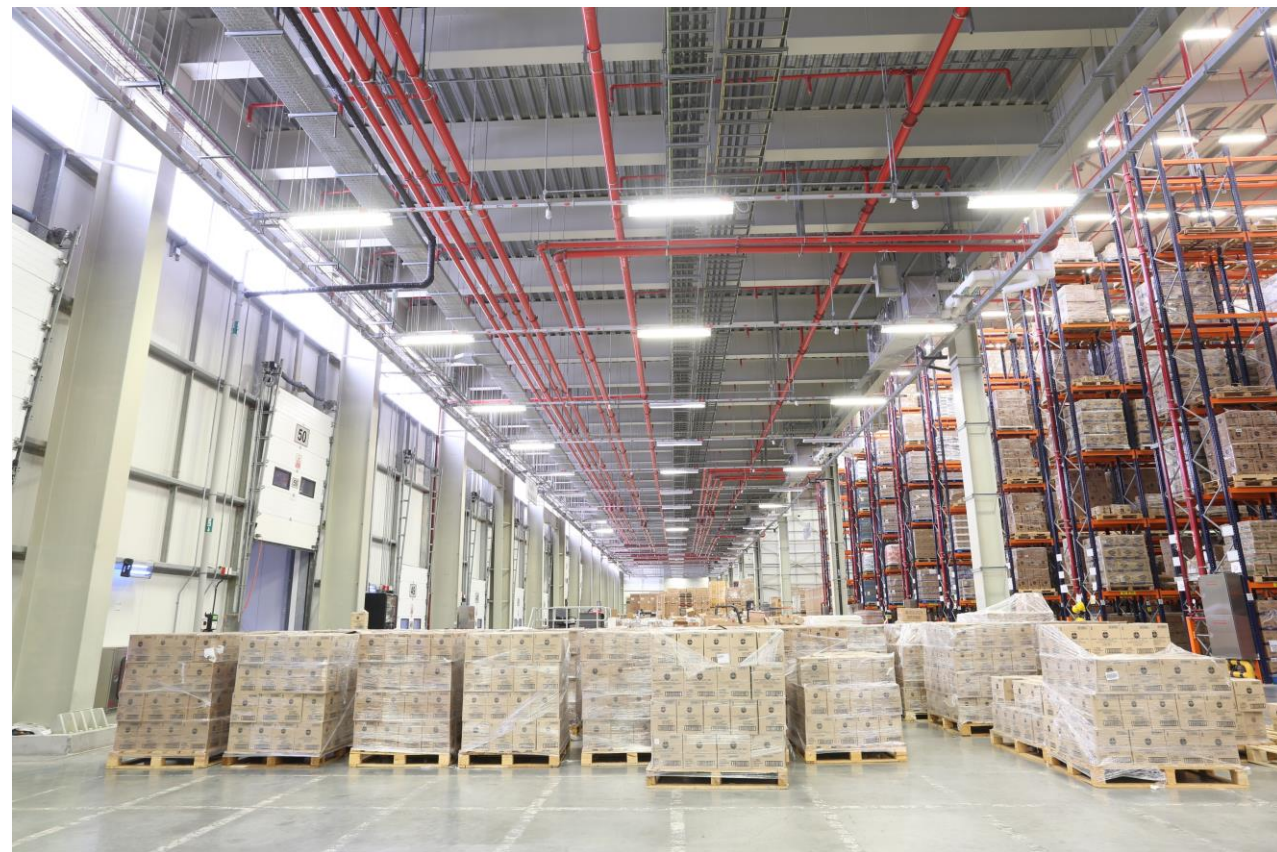


	VNA	WIDE AISLE
Frozen Chamber 1 (-22°)	7,600 pp (G+7)	-
Frozen Chamber 2 (-22°/+1°)	4,448 pp (G+7)	-
Chill Chamber 1 (+1°)	4,448 pp (G+7)	-
Chill Chamber 2 (+7°)	2,400 pp (G+7)	-
B3 A/C(+24°)	20,313 pp (G+8)	-
B4 A/C(+24)	9,000 pp (G+8)	8,715 pp (G+6)
TOTAL	48,209 pp	8,715 pp

A/C Open Warehouse/Block Stacking Area = 4,830 SQM

SERVICE DETAILS

View from the Inside





INDUSTRIES COVERED

INDUSTRIES

Industrial/Engineering



Food and
Beverage/Perishable



Gas and Petrochem



Retail/Consumer Goods



Leisure and Sports



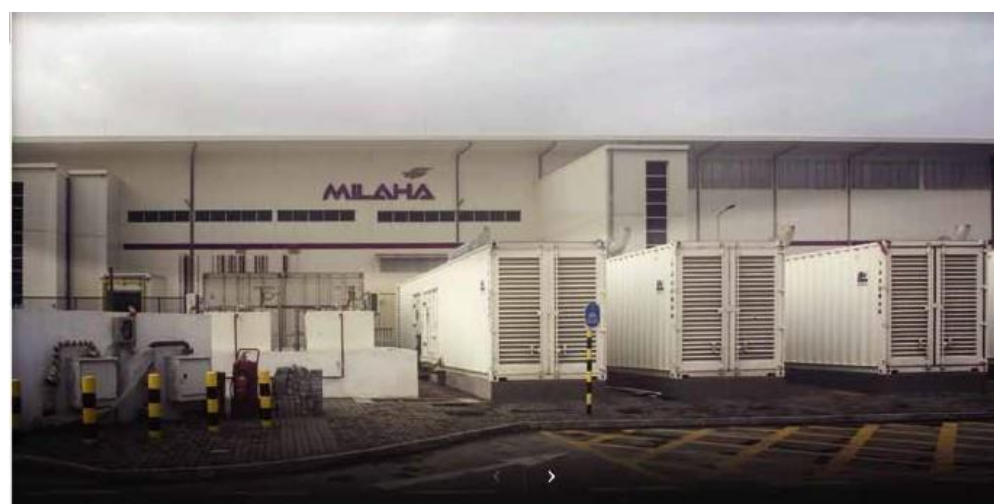
Airline and Maritime



BONDED MILAHA LOGISTICS CITY

Your New Regional Distribution hub

With huge investment and expansion in the shipping sector, port infrastructure and air cargo industry, Doha is emerging as a logistics hub connecting East to West and becoming a distribution centre for GCC, Indian Sub-continent, Levant, CIS (Commonwealth of Independent States) and East Africa (total population of approx. 2 billion)



Key Benefits:

Milaha Logistics City can operate as global transit hub with access to 30+ countries and 2 billion people within 8 hours flight connection time

Lowering distribution cost through agile supply chain design with various airlines, shipping lines and overland services, Milaha can utilize multi-modal options to optimize delivery time, reduce shipping costs and improve end user satisfaction

One stop
shop
for your
**Logistical
Solutions**



BONDED VS FREEZONE

Understanding The Value



Clearance



Scope



Regulations



Manufacturing

BONDED

Fast Clearance due to dedicated customs 24/7 for Milaha Customers only.
Milaha Bank Guarantee

Bonded and Domestic same location
Bonded Storage renewable after 1 year

IOR needed for goods entering the Bonded Zone

Finished Goods Value Added Services are permitted in the Bonded Zone

FREEZONE

Customs Authorities capabilities spread against multiple customers.
Customer Bank Guarantee

Regulations/process for Domestic Cargo still under development

IOR/EOR needed for goods existing the Freezone

Manufacturing is permitted



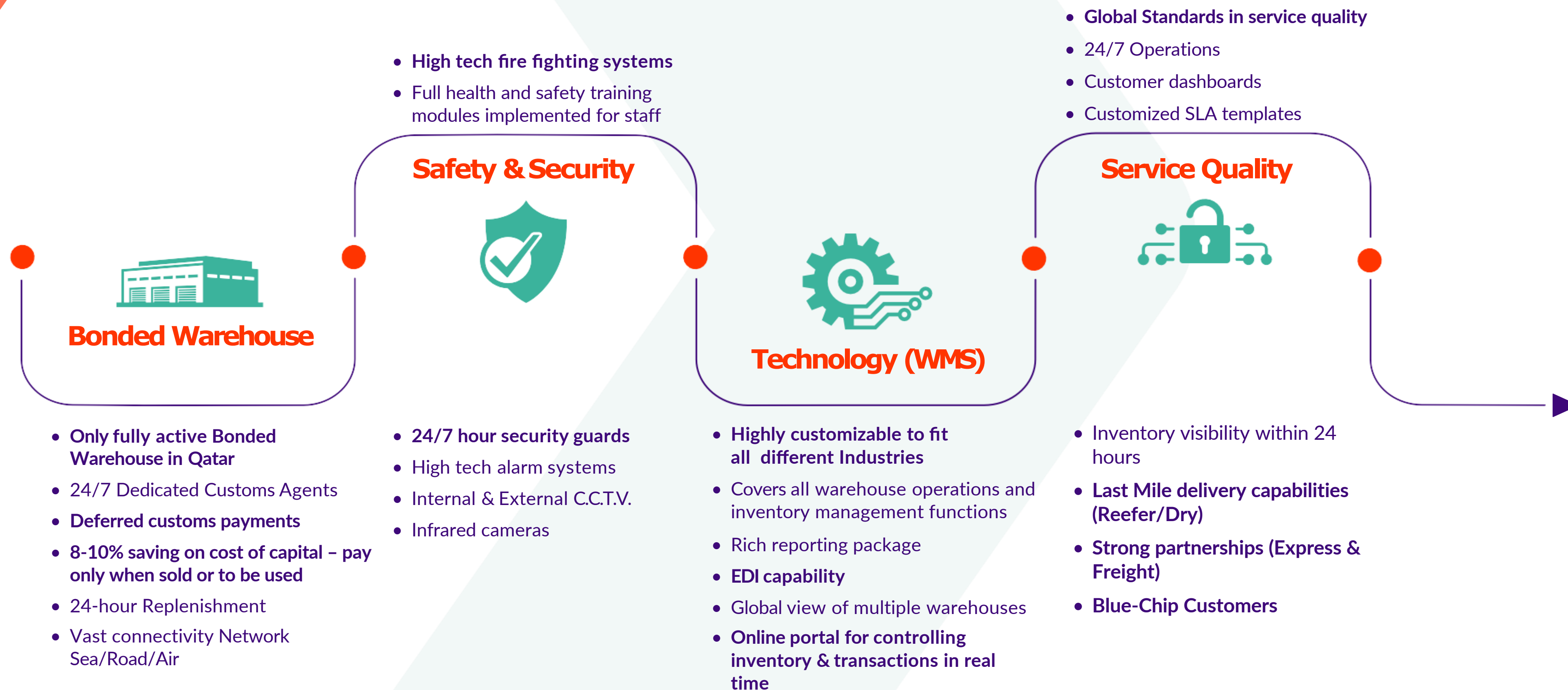
HOW TO EFFECTIVELY USE THE BONDED SETUP

Customized Solution for your Business Model





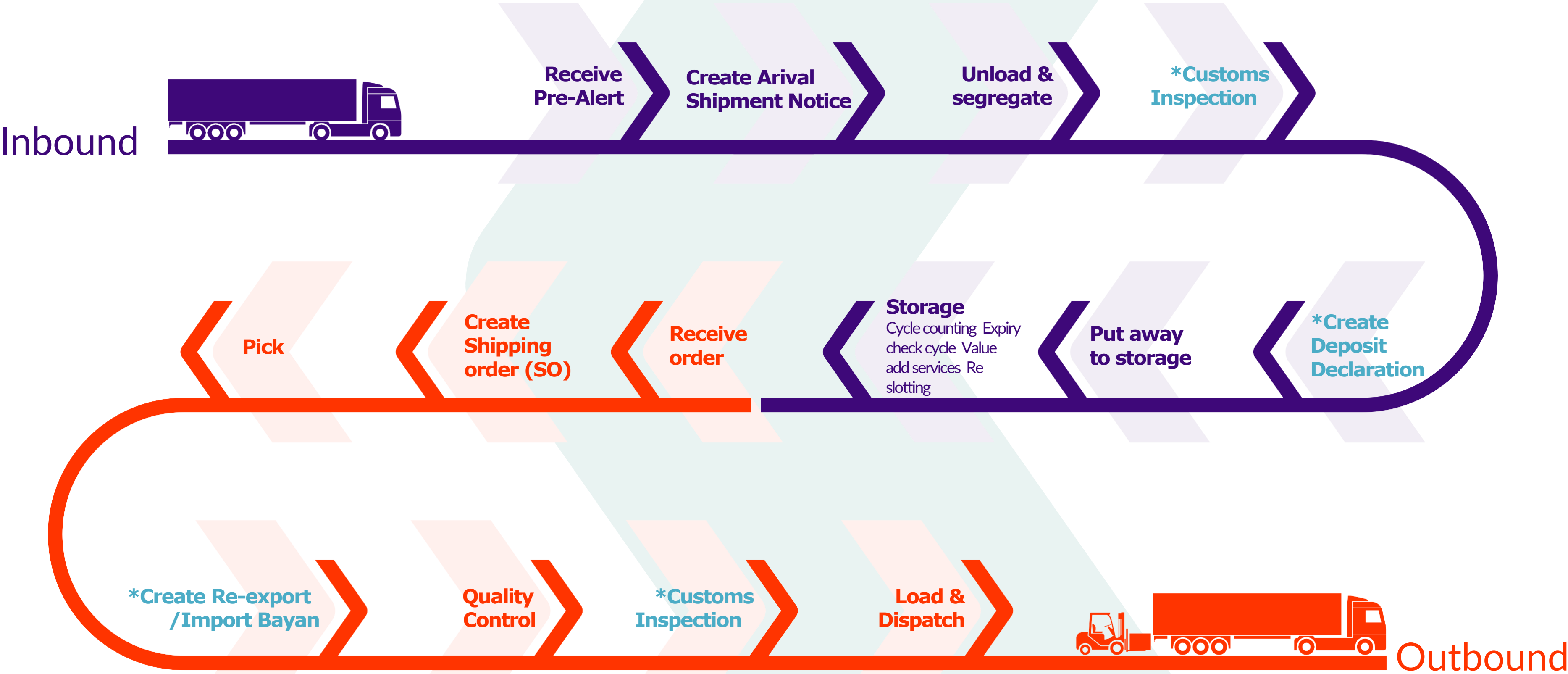
OUR SUCCESS PILLARS





SERVICE DETAILS

Life Cycle of Goods in Milaha's Warehouse



**Applicable for Bonded Setup Only*



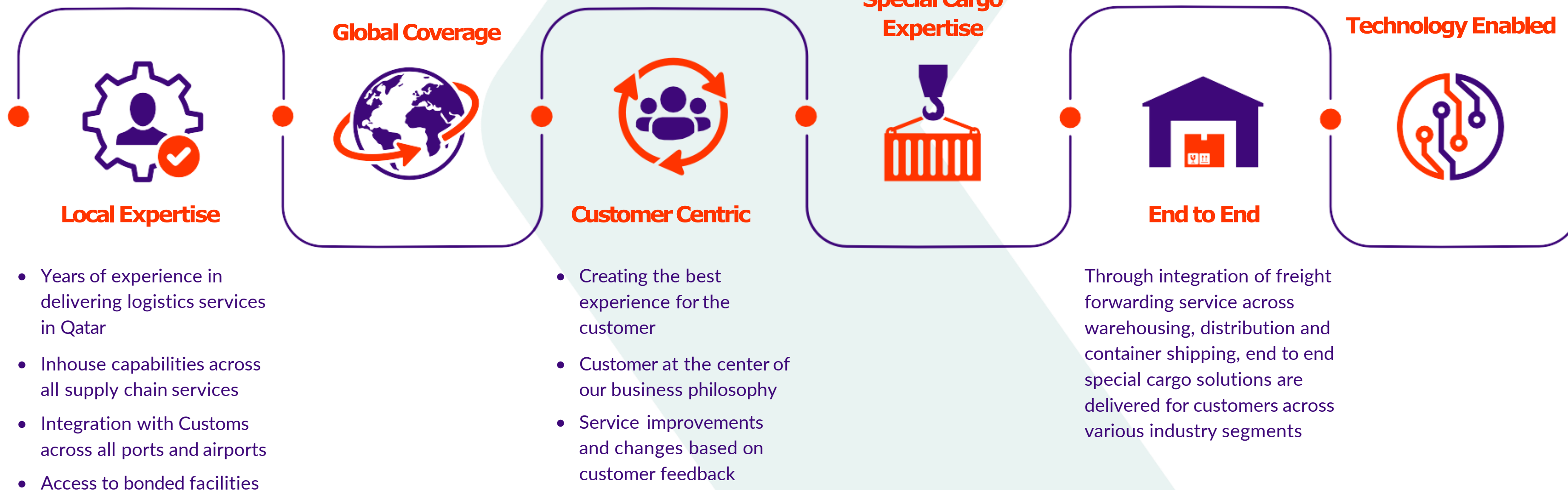
SERVICE BENEFITS

End to End

Network partnerships with global majors with strong operations across all continents to ensure seamless connectivity for all cargo types

Extensive expertise across project cargo, dangerous goods, reefer cargo and other special cargo requirements

Services supported by Oracle Transportation Management and other software solutions to deliver services efficiently in a transparent and reliable manner





CENTRAL VISIBILITY & CONTROL

Control Tower at MLC



Client



Control Tower



Freight Forwarding



Customs Clearance

Dedicated Control Tower

- One communication point
- Inbound and outbound movement management
- Warehousing Operations control
- Generating & finalizing documentation
- Manage the clearance process
- Freight planning and arrangement
- End to End visibility on shipments

Warehouse Operations



End to End optimization

- Realize synergies across the entire supply chain operations, identify inefficiencies & optimize service
- Globalize the adherence to local requirements
- Optimize cost across the entire supply chain
- Single communication, flagging & billing on the order level regardless of the number of legs involved



CONTACT US

Contact our Freight Logistics
Expert on:

mlcwarehouse@milaha.com

 +974 6663 5588

Or Visit our Website:

www.Milaha.com

