



Maritime & Logistics



MARITIME & LOGISTICS

WAREHOUSING
& DISTRIBUTION





INTRODUCTION

Warehousing & Distribution

Milaha Logistics City is strategically located with close proximity from the main ports and the new orbital road



The land plot is 432,000m² and the first phase Milaha has built is a 35,000m² warehouse split into Frozen, Chilled and Ambient chambers to cater for the different product

30 km
from
Hamad Port

25 km
from Hamad
International
Airport

24 hrs
Security


Bonded





SERVICE BENEFITS

- Floor Clearly marked
- Infrared cameras
- Motion detectors
- 24/7 hour 3rd party alarm monitoring
- Safety signs in place
- High tech fire fighting systems
- High tech fire fighting systems
- Obligatory safety sessions for all employees

- Frozen
- Chilled
- Temperature control
- Open yard



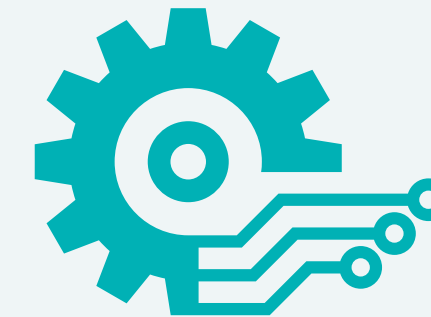
Bonded Warehouse & Customers

- Only fully active Bonded Warehouse in Qatar
- 24/7 Dedicated Customs Agents
- Duty Free storage
- 24-hour Replenishment
- Vast connectivity Network Sea/Road/Air

Safety & Security



- 24/7 hour security guards
- High tech alarm systems
- Internal & External C.C.T.V.
- Infrared cameras
- Motion detectors
- 24/7 hour 3rd party alarm monitoring
- Bonded Warehouse



Technology (WMS)

- Highly customizable to fit all different logistical needs
- Covers all warehouse operations and inventory management functions
- Rich reporting package
- Integrated with RF scanners
- EDI capability
- Global view of multiple warehouses
- Online portal for viewing inventory levels & transactions in real time

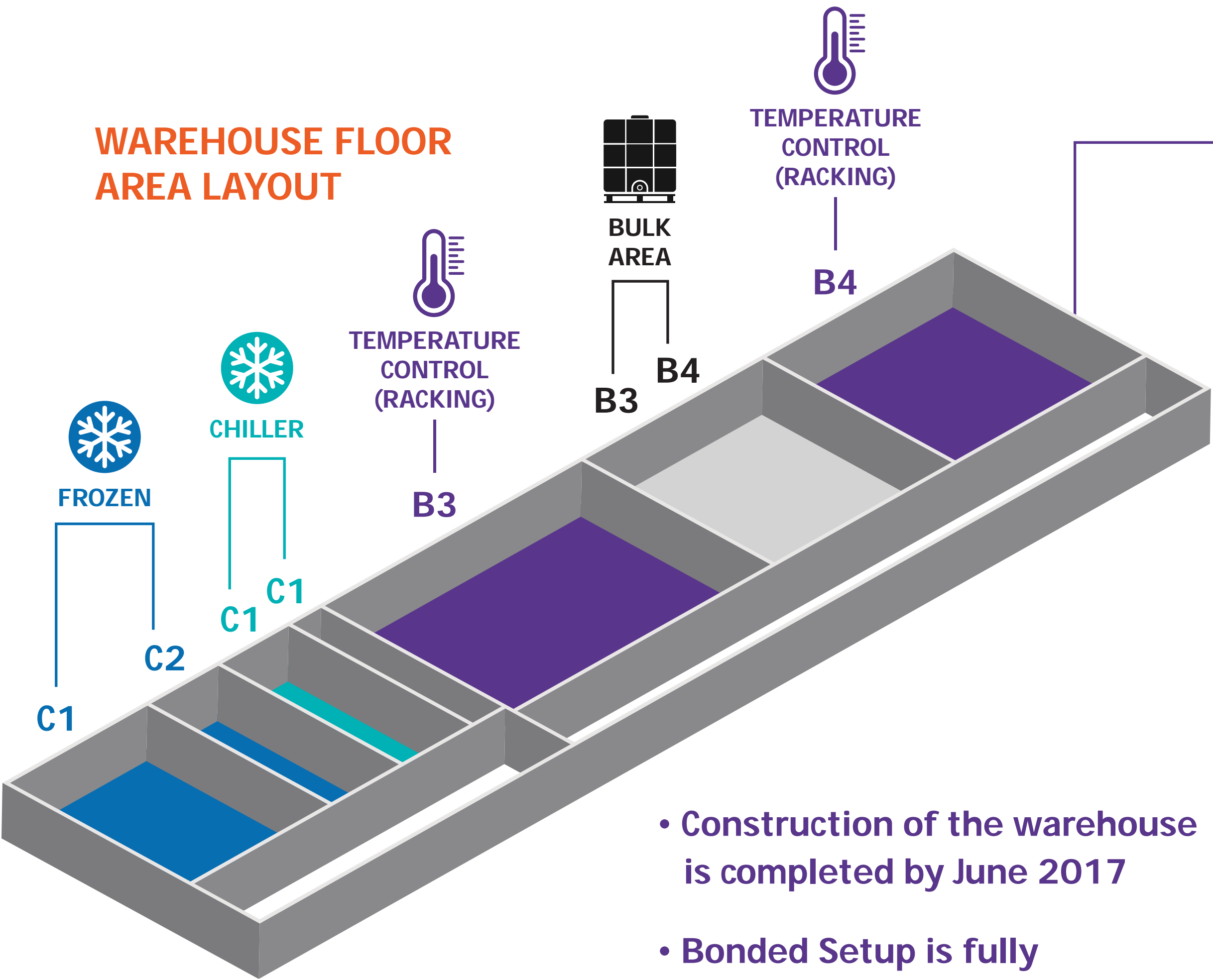
Diverse Offering





SERVICE DETAILS

Layout & Specifications



- Construction of the warehouse is completed by June 2017
- Bonded Setup is fully functional since 2019



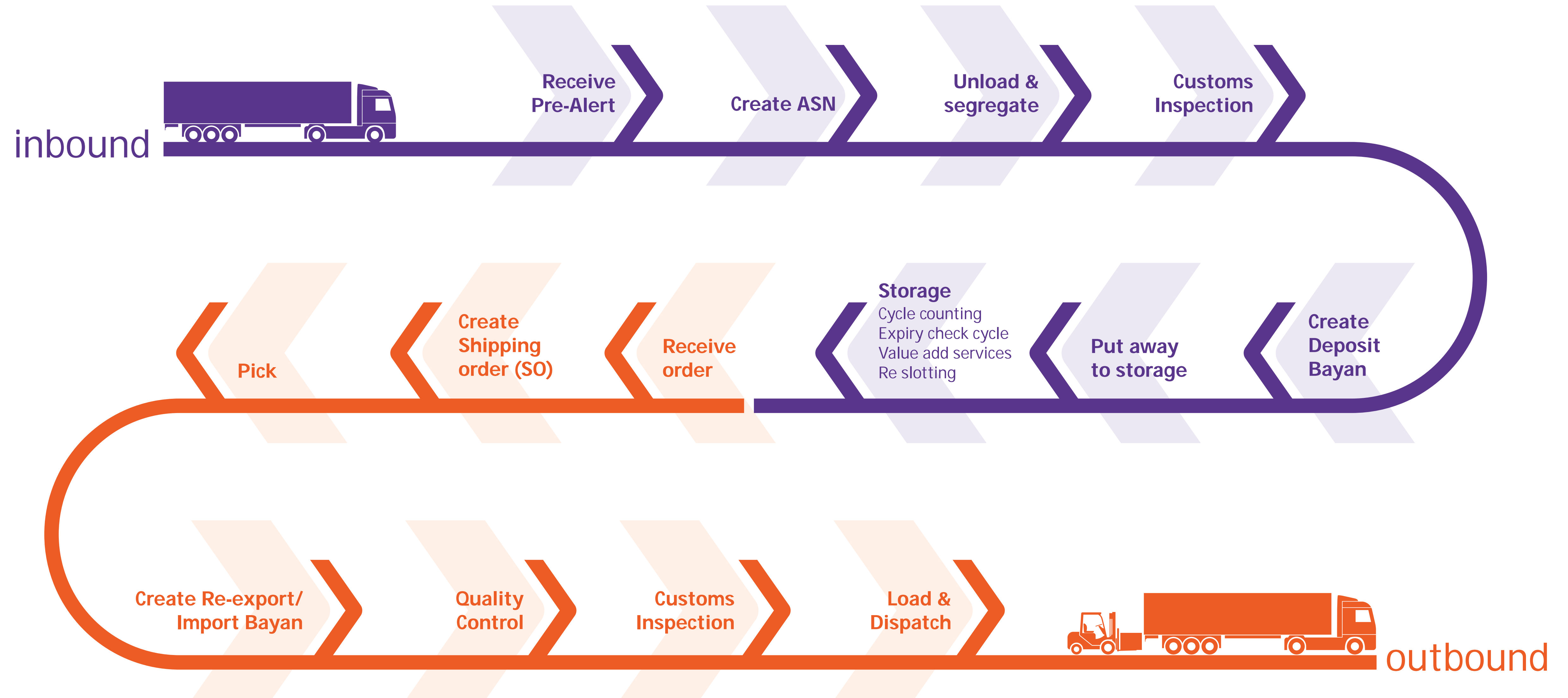
	VNA	WIDE AISLE
Frozen Chamber 1 (-22°)	7,600 pp (G+7)	-
Frozen Chamber 2 (-22°/+1°)	4,448 pp (G+7)	-
Chill Chamber 1 (+1°)	4,448 pp (G+7)	-
Chill Chamber 2 (+7°)	2,400 pp (G+7)	-
B3 A/C (+24°)	20,313 pp (G+8)	-
B4 A/C (+24)	-	8,715 pp (G+6)
TOTAL	39,209 pp	8,715 pp

A/C Open Warehouse/Block Stacking Area = 4,830 SQ M



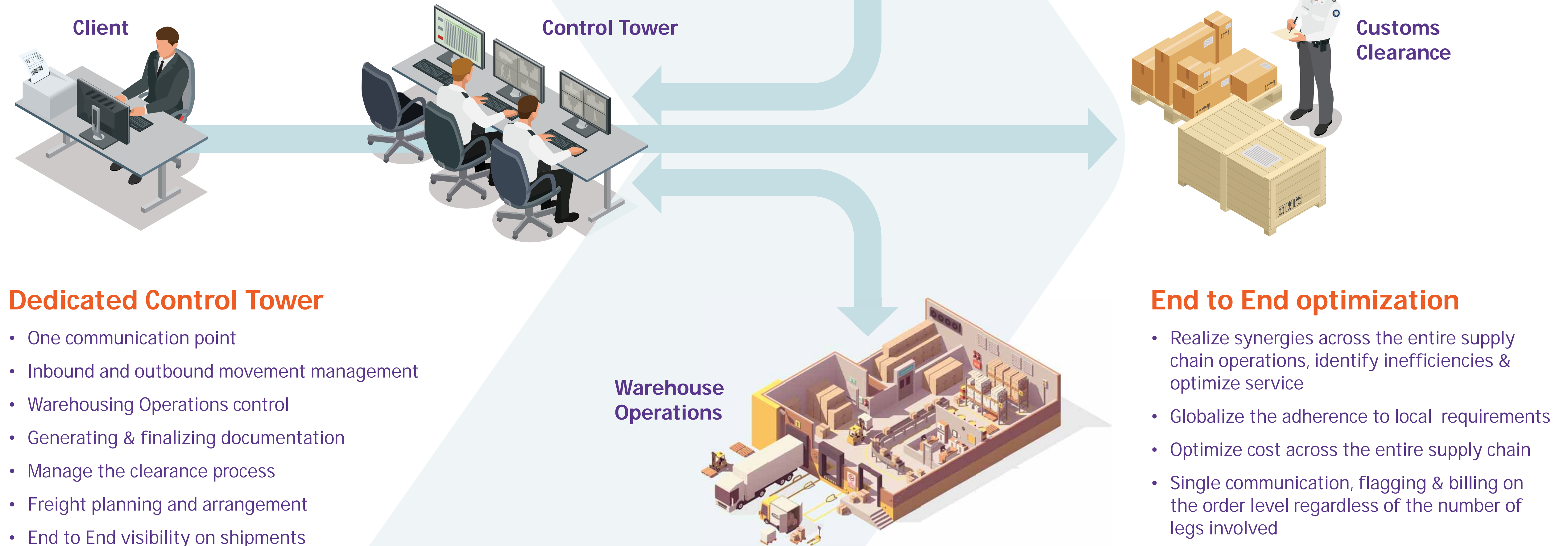
SERVICE DETAILS

Life Cycle of Goods in Milaha's Bonded Warehouse



Milaha Logistics City, linked with other logistics products digitally enables central oversight & control

Schema of Control Tower at MLC





SERVICE DETAILS

Bonded facility at **Milaha Logistics City** enables Doha to be used as **regional distribution hub**

With huge investment and expansion in the shipping sector, port infrastructure and air cargo industry, Doha is emerging as a logistics hub connecting East to West and becoming a distribution center for GCC, Indian Sub-continent, Levant, CIS (Commonwealth of Independent States) and East Africa (total population of approx. 2 billion)



Key Benefits:
Milaha Logistics City can operate as global transit hub with access to 30+ countries and 2 billion people within 8 hours flight connection time

Lowering distribution cost through agile supply chain design with various airlines, shipping lines and overland services, Milaha can utilize multi-modal options to optimize delivery time, reduce shipping costs and improve end user satisfaction

One stop
shop
— for your —
**Logistical
Solutions**



